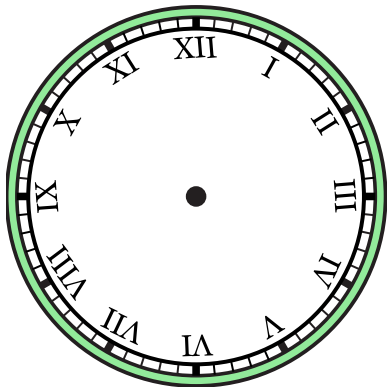




Dessinez l'aiguille des heures et des minutes sur l'horloge pour qu'elle représente l'heure indiquée.

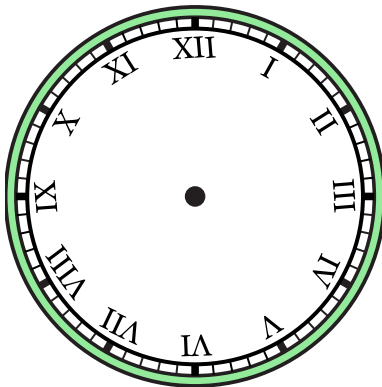
1)

3:30



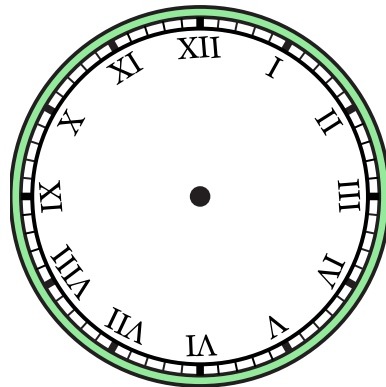
2)

1:00



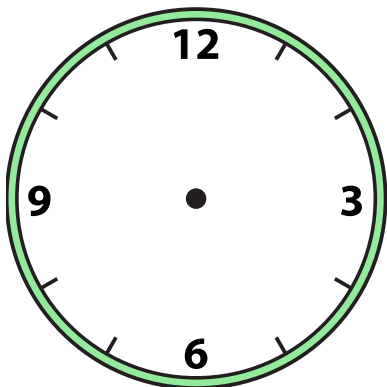
3)

10:30



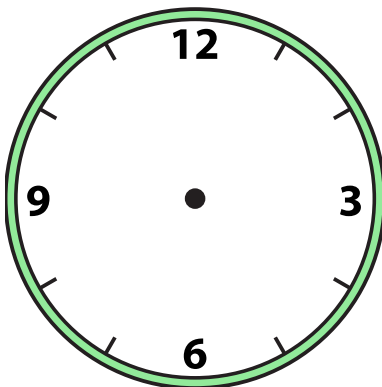
4)

9:30



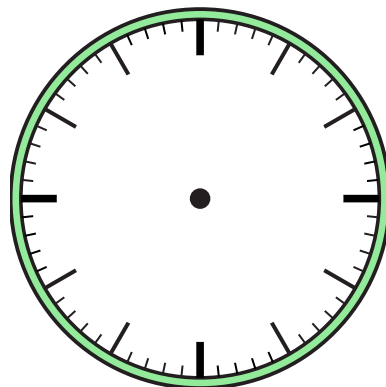
5)

6:00



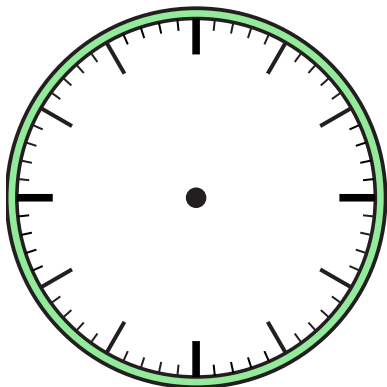
6)

12:00



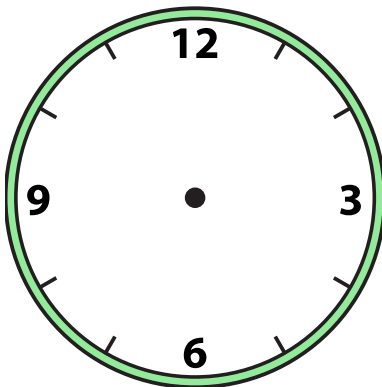
7)

12:30



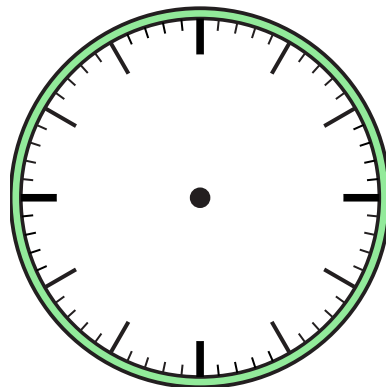
8)

2:30



9)

1:30

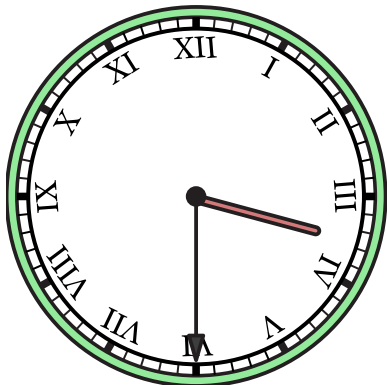




Dessinez l'aiguille des heures et des minutes sur l'horloge pour qu'elle représente l'heure indiquée.

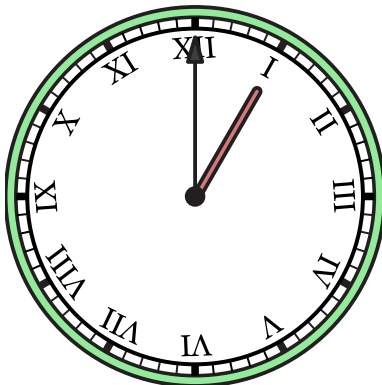
1)

3:30



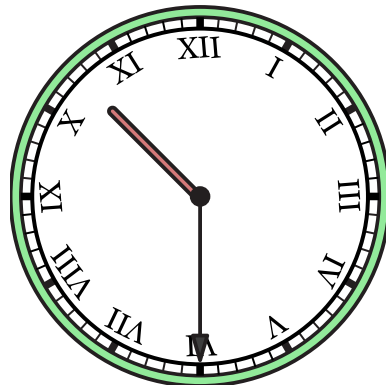
2)

1:00



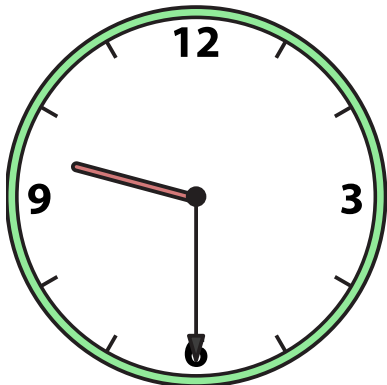
3)

10:30



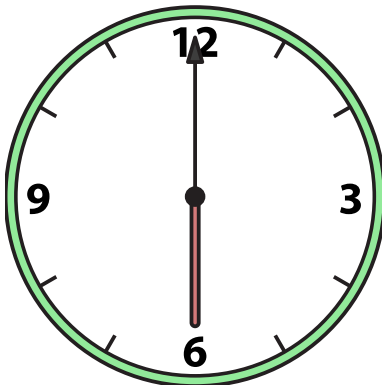
4)

9:30



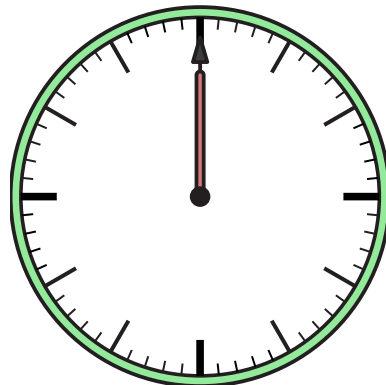
5)

6:00



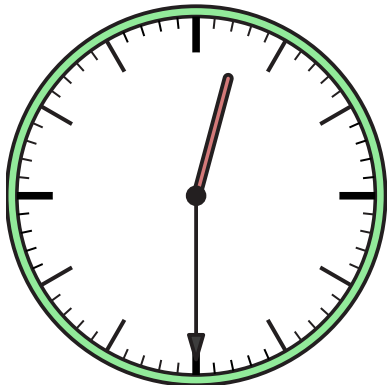
6)

12:00



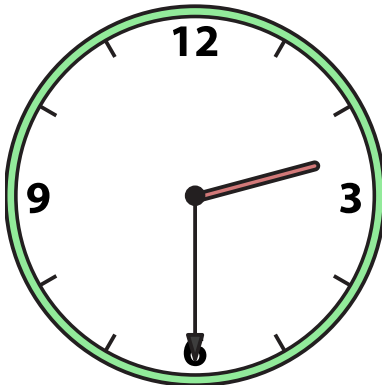
7)

12:30



8)

2:30



9)

1:30

