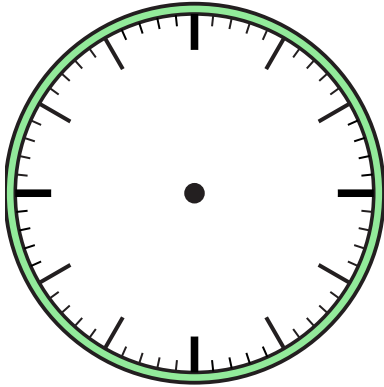




Dessinez l'aiguille des heures et des minutes sur l'horloge pour qu'elle représente l'heure indiquée.

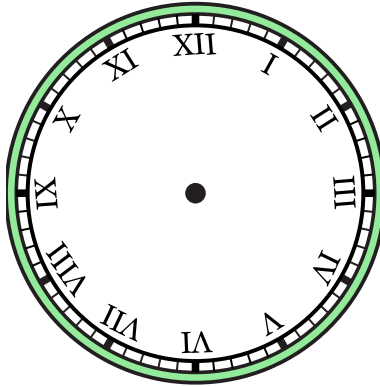
1)

6:00



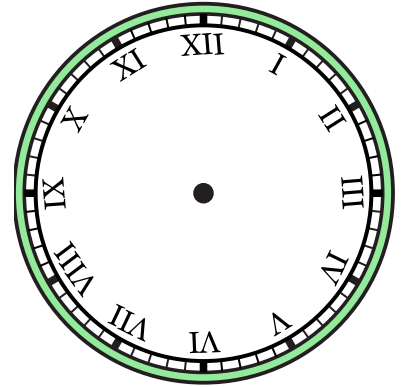
2)

11:30



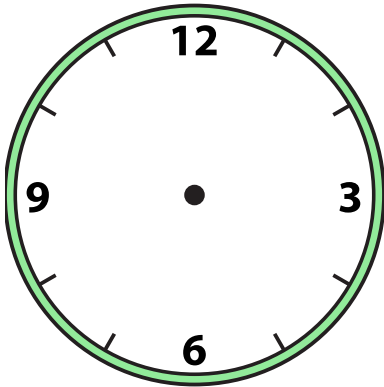
3)

12:00



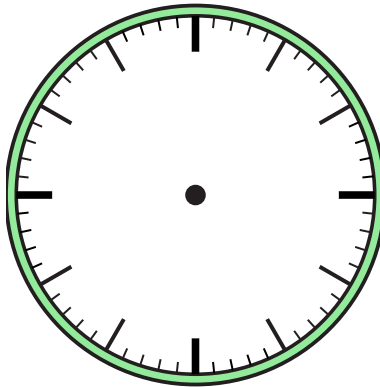
4)

9:00



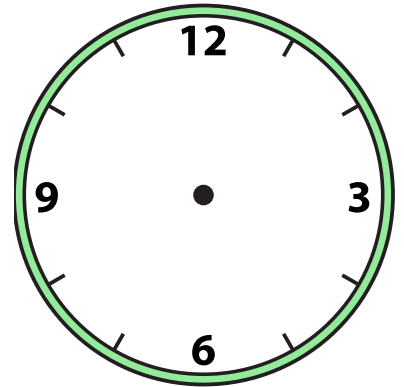
5)

12:00



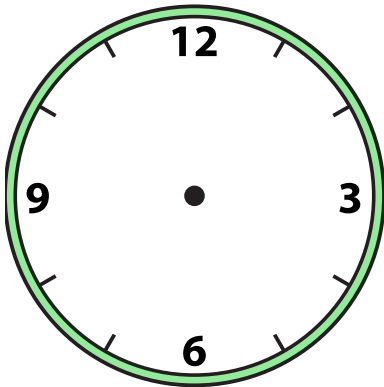
6)

6:30



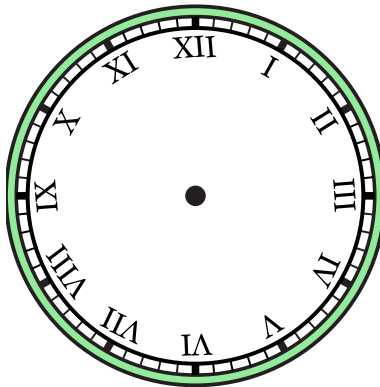
7)

10:30



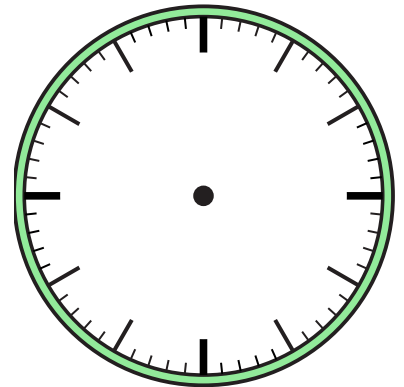
8)

3:00



9)

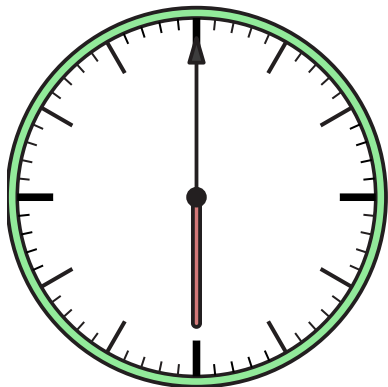
11:00



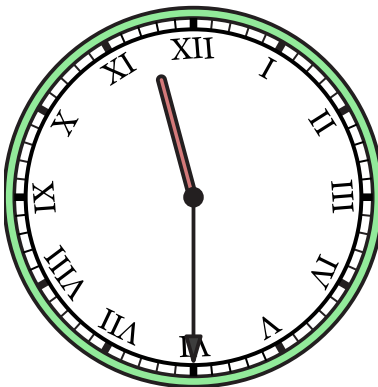


Dessinez l'aiguille des heures et des minutes sur l'horloge pour qu'elle représente l'heure indiquée.

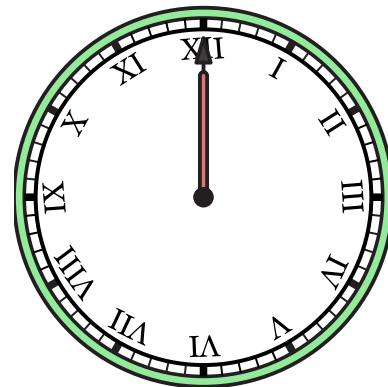
1) 6:00



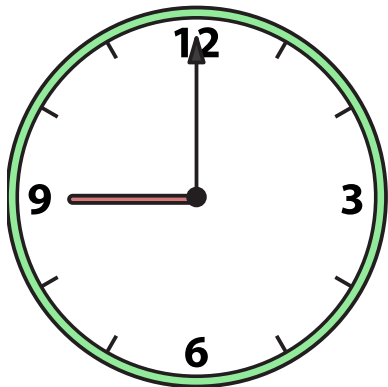
2) 11:30



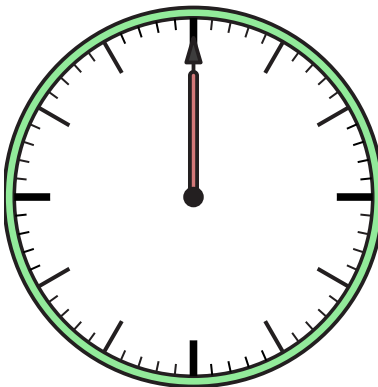
3) 12:00



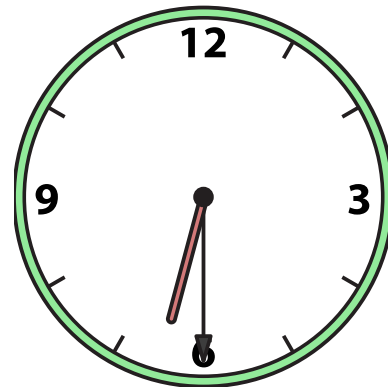
4) 9:00



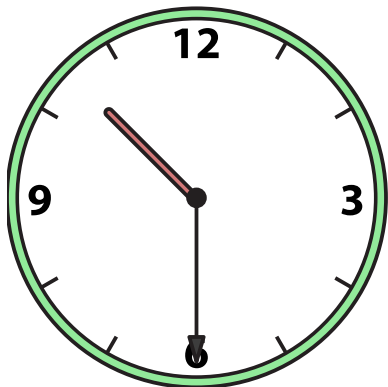
5) 12:00



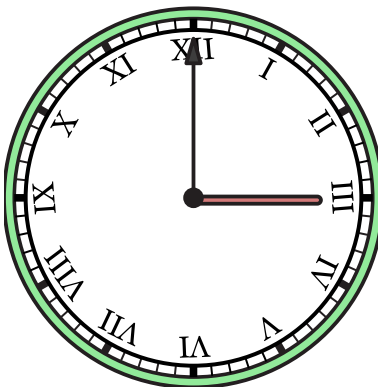
6) 6:30



7) 10:30



8) 3:00



9) 11:00

