



Déterminez quelle lettre représente le mieux le poids.

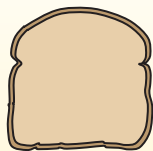
Réponses

Onza (oz)

Libra (lb)

Una onza es aproximadamente el peso de una rebanada de pan.

Uma libra é mais ou menos o peso de uma lata de vegetais.



Recordar:
Hay 16 onzas en 1 libra.

1. _____
2. _____
3. _____
4. _____
5. _____
6. _____
7. _____
8. _____
9. _____

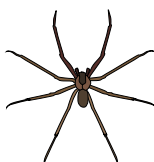
1)



Pop corn

- A. 2 livres
- B. 10 onces
- C. 0.3 livres
- D. 0.04 onces

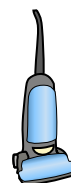
2)



Araignée

- A. 0.3 livres
- B. 0.04 onces
- C. 16 onces
- D. 4 onces

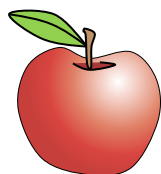
3)



Vide

- A. 3 onces
- B. 2 onces
- C. 35 livres
- D. 1100 livres

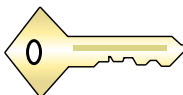
4)



Pomme

- A. 0.1 onces
- B. 5 livres
- C. 10 livres
- D. 7 onces

5)



Clé

- A. 2 livres
- B. 4 onces
- C. 220 livres
- D. 16 onces

6)



Poire

- A. 6 onces
- B. 4 livres
- C. 0.07 onces
- D. 550 livres

7)



Casquette de baseball

- A. 440 livres
- B. 11 livres
- C. 1 once
- D. 3 onces

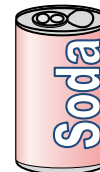
8)



Marteau

- A. 16 onces
- B. 3 livres
- C. 10 livres
- D. 1 once

9)



Canette de soda

- A. 9 onces
- B. 0.04 onces
- C. 4 livres
- D. 100 livres



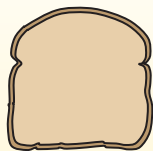
Déterminez quelle lettre représente le mieux le poids.

Onza (oz)

Libra (lb)

Una onza es aproximadamente el peso de una rebanada de pan.

Uma libra é mais ou menos o peso de uma lata de vegetais.



Recordar:
Hay 16 onzas en 1 libra.

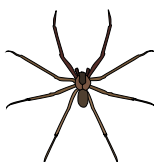
Réponses

1)



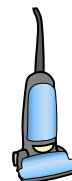
- Pop corn
 A. 2 livres
 B. 10 onces
 C. 0.3 livres
 D. 0.04 onces

2)



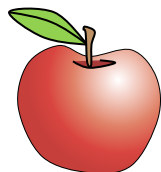
- Araignée
 A. 0.3 livres
 B. 0.04 onces
 C. 16 onces
 D. 4 onces

3)



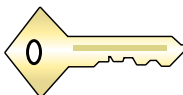
- Vide
 A. 3 onces
 B. 2 onces
 C. 35 livres
 D. 1100 livres

4)



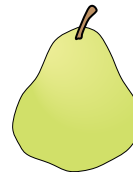
- Pomme
 A. 0.1 onces
 B. 5 livres
 C. 10 livres
 D. 7 onces

5)



- Clé
 A. 2 livres
 B. 4 onces
 C. 220 livres
 D. 16 onces

6)



- Poire
 A. 6 onces
 B. 4 livres
 C. 0.07 onces
 D. 550 livres

7)



- Casquette de baseball
 A. 440 livres
 B. 11 livres
 C. 1 once
 D. 3 onces

8)



- Marteau
 A. 16 onces
 B. 3 livres
 C. 10 livres
 D. 1 once

9)



- Canette de soda
 A. 9 onces
 B. 0.04 onces
 C. 4 livres
 D. 100 livres

1. **D**
2. **B**
3. **C**
4. **D**
5. **B**
6. **A**
7. **D**
8. **B**
9. **A**