



Colorez la fraction visuelle pour obtenir la fraction équivalente.

Ex) $\frac{1}{4} = \frac{3}{12}$

1) $\frac{4}{8} =$

2) $\frac{4}{8} =$

3) $\frac{1}{2} =$

4) $\frac{0}{6} =$

5) $\frac{1}{2} =$

6) $\frac{2}{6} =$

7) $\frac{4}{6} =$

8) $\frac{2}{8} =$

9) $\frac{6}{8} =$

Réponses

Ex. $\frac{3}{12}$

1. _____

2. _____

3. _____

4. _____

5. _____

6. _____

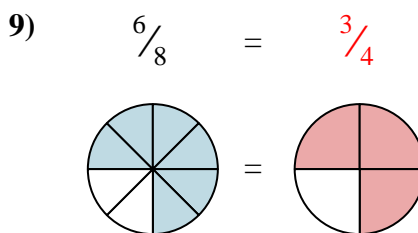
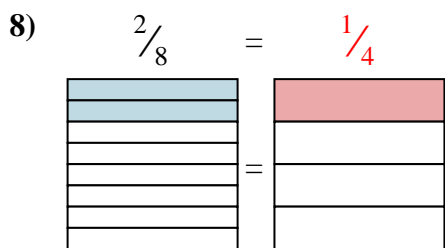
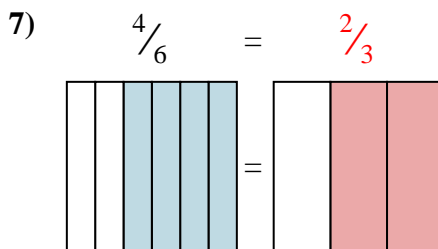
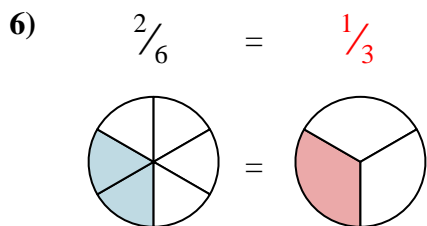
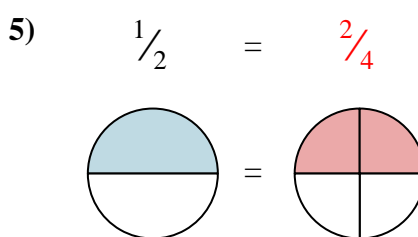
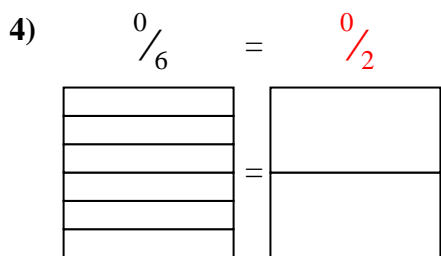
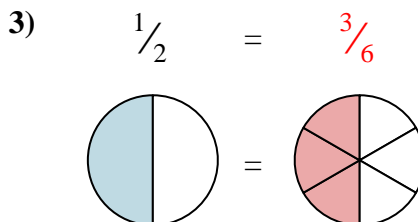
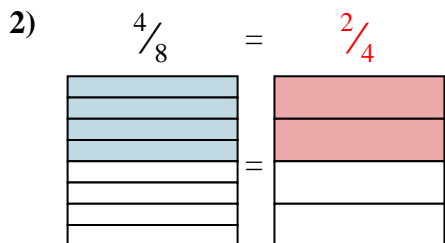
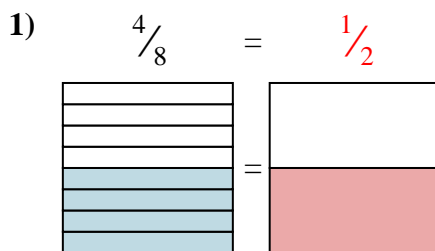
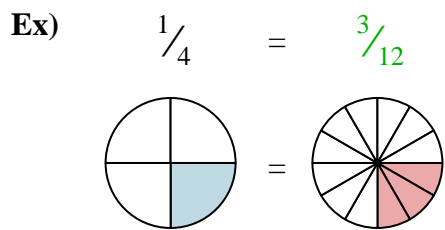
7. _____

8. _____

9. _____



Colorez la fraction visuelle pour obtenir la fraction équivalente.



Réponses

- Ex. $\frac{3}{12}$
1. $\frac{1}{2}$
2. $\frac{2}{4}$
3. $\frac{3}{6}$
4. $\frac{0}{2}$
5. $\frac{2}{4}$
6. $\frac{1}{3}$
7. $\frac{2}{3}$
8. $\frac{1}{4}$
9. $\frac{3}{4}$