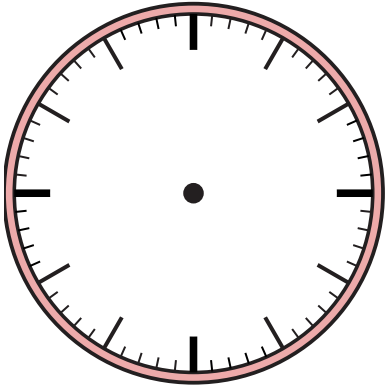




Dessinez l'aiguille des heures et des minutes sur l'horloge pour qu'elle représente l'heure indiquée.

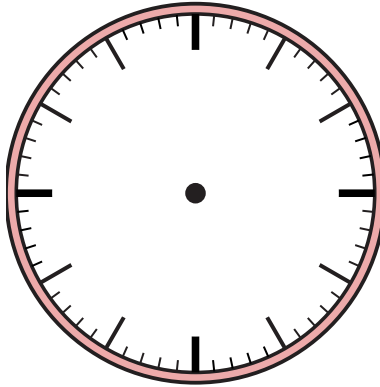
1)

11:55



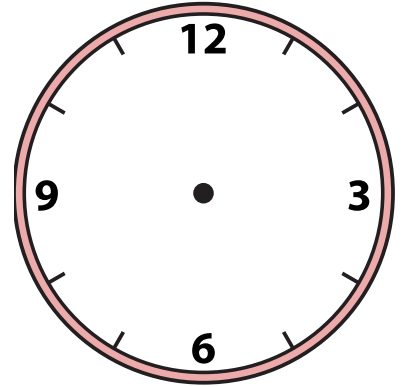
2)

7:15



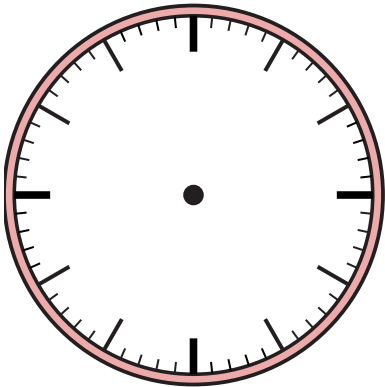
3)

8:15



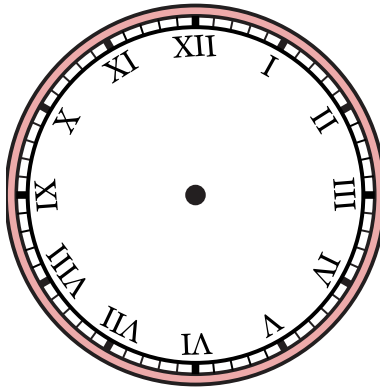
4)

10:17



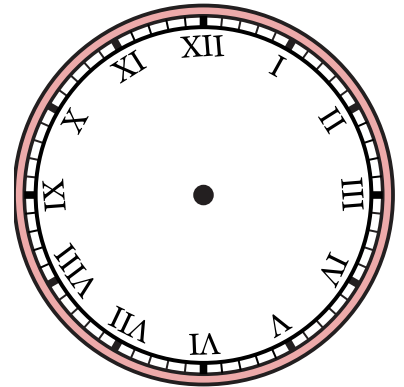
5)

8:29



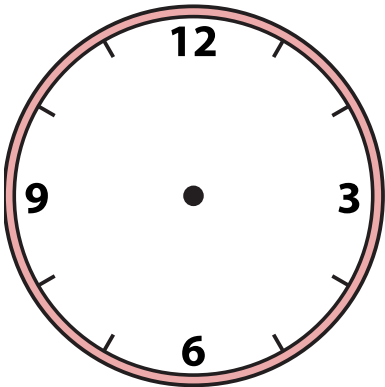
6)

2:09



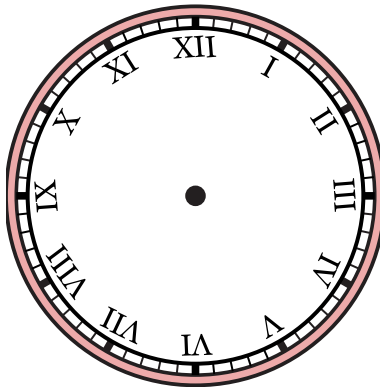
7)

12:43



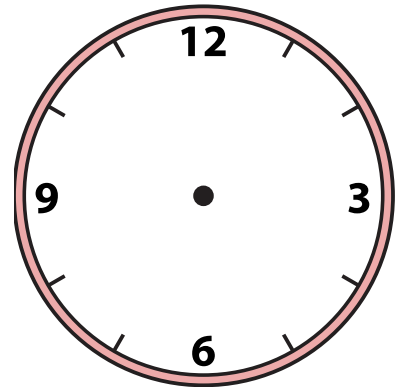
8)

4:16



9)

12:50





Dessinez l'aiguille des heures et des minutes sur l'horloge pour qu'elle représente l'heure indiquée.

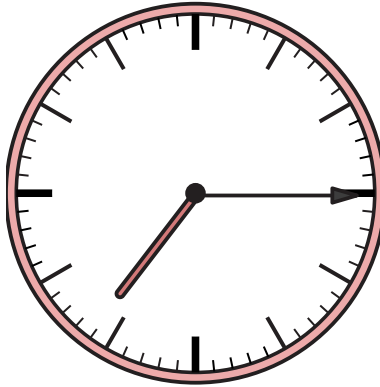
1)

11:55



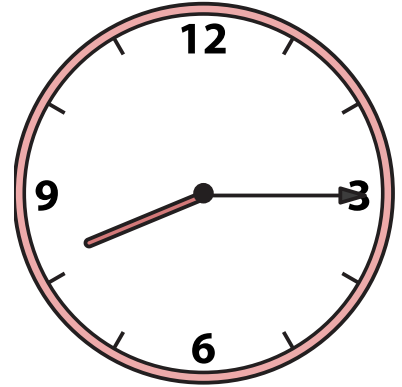
2)

7:15



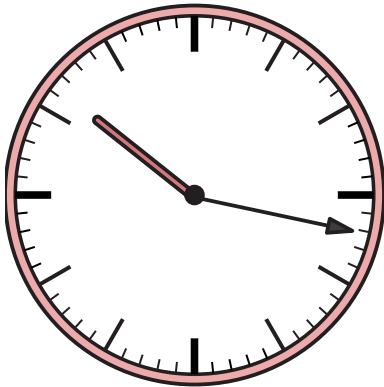
3)

8:15



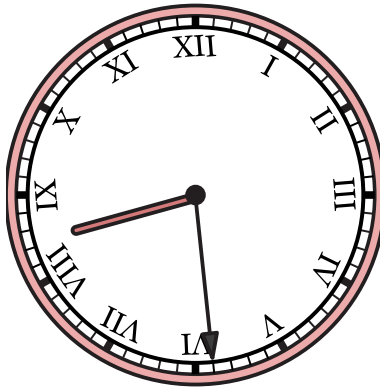
4)

10:17



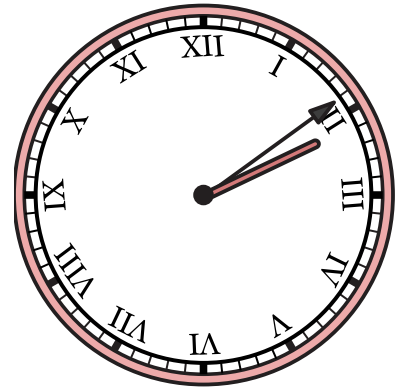
5)

8:29



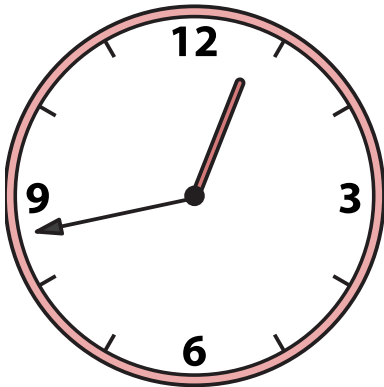
6)

2:09



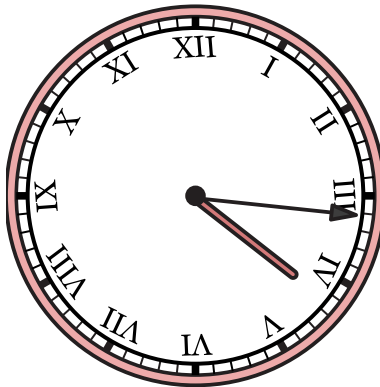
7)

12:43



8)

4:16



9)

12:50

